

2023

RAWABI AL-MAJID FASTENERS
Al-Khobar, Saudi Arabia.

Kingdom Of Saudi Arabia.

FASTENERS SUPPLIER & MANUFACTURER

Petrochemical, Power Generation,
Heavy Engineering & Constructions
Industries.



INDUSTRIAL FASTENERS, STUD BOLTS, HEX BOLTS,
ANCHOR BOLTS NUTS & WASHERS. THREAD BAR,
ROUND BAR, PLASTIC SLEEVE ANCHOR FIXING
SYSTEMS. IN-HOUSE PTFE (BLUE COATING)
FACILITY ON FASTENERS.

[PRE QUALIFICATION DOCUMENTS FASTENERS]

This Document shall be used for the project specified only, Unauthorized copies or distribution is not permitted

LIST OF CONTENTS

1. Introduction
2. Products / manufacturing capacity
3. Company quality policy statement
4. products at a glance.
5. Web site & contact address
6. List of major clients & projects
7. Material certifications
8. Mechanical Properties Of Materials.
9. Dimensions of Studs/ Hex Bolts/ Nuts/ Washers
10. In-House PTFE (Blue coating) Facility.
11. In-House Anchor Bolt Facility.



INTRODUCTION

We Rawabi Al-Majid Fasteners (ISO-9001 Certified) introduce our self as one of the leading supplier of Fasteners based in DAMMAM (DALHA INDUSTRIAL AREA) and having sales coordination office in Jubail, Riyadh & Jeddah.

We are approved vendor in Saudi Aramco , Sabic group of companies and Royal commission, our vendor number are as under,

SAUDI ARAMCO -10041049 (Document attached)

SABIC -505542 (Document attached)

We are keeping huge stocks of Fasteners alike thread bars , stud bolt, Hex & Hvy bolt, nuts, washers in different grades to meet your fastener`s requirement.

Our fabrication division is equipped with modern machine, enabling us to produce quality products. We produce Anchor bolts, u bolt etc as per our clients, drawing and specifications.

Further to this, we got a galvanizing plant to galvanize materials in accordance with

ASTM A123 / A153 & B633.

Fluoropolymer coating (Blue) as per Aramco Spec.

Our company is giving quick deliveries, competitive prices and quality products to almost all major projects in the kingdom of Saudi Arabia and in other GCC countries.

We, kindly request you to forward all your fastener enquires, enabling us to provide the best price & services.

Thank You!!!

Management (Rawabi Al-Majid Fasteners)



MANUFACTURING RANGE OF FASTENERS

2- PRODUCTS / MANUFACTURING CAPACITY .

Range	From M06 To M100 (1/4" – 4") Metric / Inch Sizes
Threading	UNC, 8UN, BSW, UNF & BSF
Products	Hex Bolts, Socket head Bolts, Heavy Hex Structural Bolts, Screws, square bolts ,foundation (Anchor) bolts, stud bolts, special Bolts, T Bolts , Hex Nuts, Heavy Hex Nuts, Flat Washers, Lock washers etc.
Standard	DIN, ASTM, AISI, BS, JIS, UNS& EN. ISO, SAE, ASME
Finishing	Self, Black oxide, Electro galvanize, Zinc Bi-chromate Yellow, Hot Dip Galvanized, PTFE

KNOWLEDGE AND UNDERSTANDING OF SPECIFICATIONS/MATERIALS

Grade of Fasteners we can cater

Stainless Steel	Super Alloy & Duplex Steel	Alloy Steel	Carbon Steel
310, 321, 347, 304/304L, 316/316L	Monel 400, K500	ASTM A193 B7/B7M, B16	ISO 898 4.6, 5.8, 8.8. 10.9 & 12.9
A2 & A4 – 50/70/70	Inconel 600, 601, 625, 718	ASTM A320 L7/L7M	ASTM A36. A325, A307 A&B
410, 416, 420, 422	Incoloy 800, 800HT, 825, 925	AISI 4340 L43	ASTM A563
B8 CL.1 & 2, B8T, B8X, B8TX, B8C	Hastelloy B2, C4, C22, C276	ASTM A193 B6	ASTM F436, F959
B8M CL.1 & 2, B8MX	Ferrallium 255 (UNS 32550)	ASTM A194 2H,2HM, 4, 7, 7M,7L	
904L	UNS S32750, S32760		
B6	Zeron 100		
C3-80	254SMO (UNS S31254)		
17-4 PH	UNS S31803/ UNS S 32205		
FV520B	A453 660 A /B/C & D		

Nitronic 50/60	Nimonic 75, 80A, 90		
	Titanium Alloys		
	Carpenter 20		
	Tantalum		

3- COMPANY QUALITY POLICY STATEMENT

It is the policy of **Rawabi Al-Majid** Fasteners to strive hard for complete customer satisfaction by providing good quality products, which stand for good values for money at the most economical cost.

RAWABI AL-MAJID FASTENERS. is committed to produce the highest quality products and related services and anticipate that its products, would certainly become a world-class and the first choice for consumer by monitoring and improving quality management system processes, products and services, and train, develop, and motivate personnel. It's the management objective to achieve the following:

- To improve profitability and company value.
- To improve the quality of products.
- To solidify the company's identity with customer.
- To improve employee well being.

RAWABI AL-MAJID FASTENERS. Management is committed to review the Quality policy and objectives, periodically, to ensure its continuing suitability. It's also committed to comply with customer and regulatory requirements and continually improve the effectiveness of the quality management system.



4- RAWABI FASTENERS PRODUCTS AT A GLANCE



4- RAWBI FASTENERS PRODUCTS AT A GLANCE



PTFE COATED BOLTS



ANCHOR BOLTS L TYPE



J TYPE ANCHOR BOLTS



STRAIGHT ANCHOR BOLTS WITH PLASTIC SLEEVES



U BOLTS FOR PIPES AND CLAMPING



STUD BOLTS B16



STUD BOLTS



SELF DRILLING SCREW



Dowel Bars Pavement Interactive



HEX BOLT B8M



JOINING PIN



5- WEB SITE & CONTACT ADDRESS

We hope RAWABI AL-MAJID FASTENERS becomes your choice to cater your project requirements and assure you of our paramount services always. As usual we warmly accept new clients to expand to our succesful portfolio. We will be Thanful to you!

Rawabi Al-Majid Fasteners

PO Box 31343 Al-Khobar-31952 Kingdom of Saudi Arabia

Tel : +966-013-837 4357

Fax: +966 -013-837 4357

Mobil: +966 543895541 (Main Office)

Mobil: +966 599311858 (Dammam Office)

Mobil: +966 59723 2457 (Jubail Sales)

Email : marketing@rawbifasteners.com

Email : sales@rawbifasteners.com

Email : rawbifasteners@hotmail.com

Web : www.rawabifasteners.com

6- LIST OF MAJOR CLIENTS & PROJECTS

Clients & Poject details

SAUDI ARAMCO	Supply of Fasteners. Stud Bolt, B8Cl-2/8, B8MCl-2/8M, B7/2H , B16/4 , Fluoropolymer coated Studs, Machine Bolts & Nuts.
SINOPEC	Stud Bolts, Nuts
Hidada Co.	Stud bolts, Machine Bolts, Nut & Washer
AES	Stud bolts, Machine Bolts, Nut & Washer
TECNICAS REUNIDAS	Stud bolts, Fluoropolymer coated Studs, Machine Bolts & Nuts.
GEYEAD	Machine Bolts, Nut & Washer
J&P	Machine Bolts, Nut & Washer
SAIPEM & Snamprogetti KSA	Stud Bolt, B8Cl-2/8, B8MCl-2/8M, B7/2H , B16/4 , Fluoropolymer coated Studs, Machine Bolts & Nuts.
Saudi TECHINT	Stud Bolt, B8Cl-2/8, B8MCl-2/8M, B7/2H , B16/4 , fluoropolymer coated Studs, Machine Bolts & Nuts.
TECHNOSERVE CO.	Stud Bolt, B7/2H , B16/4 , Double End Studs, Eye Bolts.
GERAB Int`L	Stud Bolt, B8Cl-2/8, B8MCl-2/8M, B7/2H , B16/Grd.4
Nasser S.Al-Hajri Corp. Gulf Asia.	Machine Bolts, Nut & Washer Stud Bolt, B8Cl-2/8, B8MCl-2/8M, B7/2H , B16/4 , Fluoropolymer coated Studs, Machine Bolts & Nuts, beam clamps, U-Bolts , Anchor Bolts etc.
Zamil Steel	Stud bolts, Machine Bolts & Nuts.
Saudi Etihad Cont. Co.	Stud Bolt, B8Cl-2/8, B8MCl-2/8M, B7/2H , B16/Grd.4 and Machine Bolts

MATERAIL CERTIFICATIONS

CERTIFICATIONS & MTC

Material inspection and certification is done as per the requirements of relevant standards, specifications and project requirements. Certificate of EN 10204 / 3.1 is being provided for our products. Special instructions regarding inspection & certifications such as laboratory testing and 3rd party inspections are being performed for our products depending upon projects requirements.

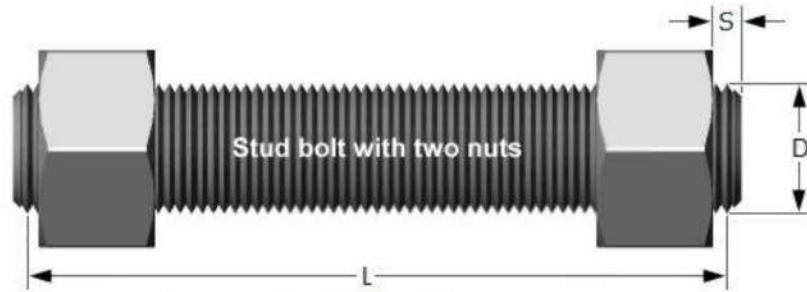
9- MECHANICAL PROPERTIES OF MATERIAL

			MECHANICAL PROPERTIES						
DESCRIPTION	MATERIAL STANDARDS	GRADE	CLASS / TYPE	T.S (N/mm ²)	Y.S N/mm ²	ELONGATION (%)	AREA REDUCE (%)	PROOF LOAD	HARDNESS
ASTM A193 GR. B7	ASTM A193	B7	-	861 min	723 min	16	50	X	26-35 HRC
ASTM A194 GR. 8M	ASTM A194	GR. 8M	-	X	X	X	X	X	60-105 HRB
ASTM A194 GR. 8	ASTM A194	GR. 8	-	X	X	X	X	X	60-105 HRB
AISI 304 / 304L	AISI 304/304L	GR. 8	-	X	X	X	X	X	60-105 HRB
ASTM A193 GR. B8 CL. 1	ASTM A193	B8	CL. 1	515	205	30	50	X	20 HRC (max)
ASTM A193 GR. B8 CL. 2	ASTM A193	B8	CL. 2	860	690	12	35	X	35 HRC (max)
ASTM A193 GR. B8LN	ASTM A193	B8LN	CL. 1	515	205	30	50	X	20 HRC (max)
AISI 316/316L	AISI 316 /316L	316/316L	-	515	205	30	50	X	20 HRC (max)
ASTM A193 GR. B8M CL. 1	ASTM A193	B8M	CL. 1	515	205	30	50	X	18.0 HRC (max)
ASTM A193 GR. B8M CL. 2	ASTM A193	B8M	CL. 2	760	665	15	45	X	35 HRC (max)
ASTM A193 GR. B5	ASTM A193	B5	-	690	550	16	50	X	-
ASTM A320 Gr. L7	ASTM A320	L7	-	860 min	725 min	16	50	x	35 HRC (max)
ASTM A194 GR. 7	ASTM A194	GR. 7	-	x	x	x	x	***	24-38 HRC
ASTM A194 GR. 7M	ASTM A194	GR. 7M	-	x	x	x	x		24 HRC (max)
ASTM A194 GR. 4	ASTM A194	GR. 4	-	x	x	x	x	***	24-38 HRC
ASTM A193 GR. B16	ASTM A193	B16	-	860	725	18	50	X	35 HRC (max)
SAE 4340	SAE 4340	SAE 4340	-	1061	963	18	53.8	X	337 HB (36 HRC)
BS 970 EN 8	BS 970	EN 8	080M40	550 min	280 min	16	-	X	152-207 HB
BS 970 EN 24	BS 970	EN 024	817M40	1061	963	18	53.8	X	337 HB (36 HRC)
EN 024 (34CrNiMo6)	EN 10083-1	EN 024	-	1061	963	13.5	53.8	X	337 HB (36 HRC)
AISI 4140	AISI 4140	4140	-	861	723	16	50	X	26~35 HRC
ASTM F568 GR. 12.9	ASTM F568	GR. 12.9	-	1220	1100	8	35	X	38-44 HRC
ASTM F568 GR. 10.9	ASTM F568	GR. 10.9	-	1040	940	9	35	X	33-39 HRC
ASTM A193 GR. B8T CL. 2	ASTM A193	B8T	CL. 2	860	690	12	35	X	35 HRC (max)

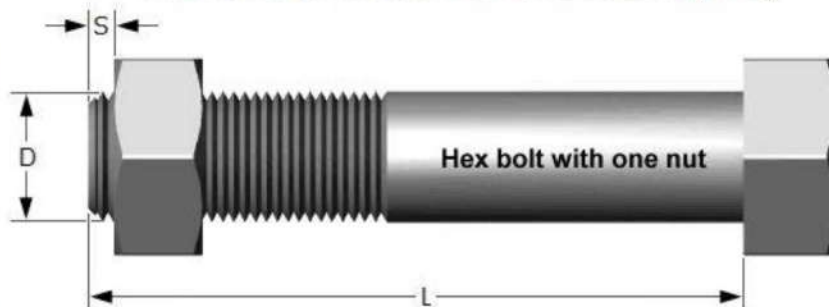
ASTM A193 GR. B8C CL. 2	ASTM A193	B8C	CL. 2	860	690	12	35	X	35 HRC (max)
ASTM A194 GR. 8C	ASTM A194	8C	-	-	-	-	-	X	32 HRC (max)
EN 10083 - 1 (C35)	EN 10083 - 1	C35	-	520	270	19	-	X	-
			MECHANICAL PROPERTIES						
DESCRIPTION	MATERIAL STANDARDS	GRADE	CLASS / TYPE	T.S (N/mm²)	Y.S N/mm²	ELONGATION (%)	AREA REDUCE (%)	PROOF LOAD	HARDNESS
ASTM A36	ASTM A36	A36	-	400-550	250 min	23 (min)	-	X	-
AISI 1045	AISI 1045	1045	-	647 (min)	415 (min)	17.5 (min)	43.5 (min)	-	-
ASTM F568 GR. 8.8	ASTM F568	GR. 8.8	-	830 min	660 min	12	35	X	23-34 HRC
BS 3692 GR. 5.8	BS 3692	GR. 5.8	-	520 min	420 min	10	35	X	82 HRB (min)
BS 3692 GR. 8.8	BS 3692	GR. 8.8	-	830 min	660 min	12	52	X	23-34 HRC
BS 3692 GR. 4.6	BS 3692	GR. 4.6	-	400	240	22	35	X	65-95 HRB
EN19 (42CRMO4)	EN 10083-1	EN 019	-	860	720	16	50	X	321 HB MAX
ASTM A307 Gr.C	ASTM A307	GR. C	-	400-550	250 min	23	-	-	-
ASTM A194 Gr.2H	ASTM A194	GR. 2H		-	-	-	-	984.5 KN	24-38 HRC
ASTM A563 CL.10S	ASTM A563	CL. 10S	HVY HEX	-	-	-	-	180 KSI	26-36 HRC
ASTM A563 CL.10	ASTM A563	CL. 10	-	-	-	-	-	1060 N/mm²	26-36 HRC
ASTM A307 GR. B	ASTM A307	GR. B	-	415-690	-	18	-	X	69-95 HRB
ASTM A307 GR. A	ASTM A307	GR. A	-	415 (min)	-	18	-	X	69-100 HRB
ASTM A325 Type 1	ASTM A325	-	TYPE 1	830	660	17	50	X	24-35 HRC
ASTM A325 Type 3	ASTM A325	CL. A	TYPE 3	830	660	17	50	X	24-35 HRC
BS 4395 GR. 8.8	BS 4395	GR. 8.8	-	830	660	12	35	X	23-34 HRC
EN 10025 S275J2G3	EN 10025	S275J0	-	-	265	20	-	X	-
AISI 1040	AISI 1040	1040	-	600 (min)	362 (min)	30 (min)	49 (min)	X	90 HRB (15 HRC)
AISI 1035	AISI 1035	1035	-	-	-	-	-	X	-
AISI 1060	AISI 1060	1060	-	814 (min)	483 (min)	17	-	X	179 - 241 HB
AISI 1095	AISI 1095	1095	-	965 (min)	572 (min)	9	-	X	192 - 293 HB
ASTM A194 Gr.2HM	ASTM A194	GR. 2HM	-	-	-	-	-	-	22 HRC (max)
ASTM F1554	ASTM F1554	GR. 55	-	517-655	380 min	18 (min)	30 (min)	-	-
ASTM F1554	ASTM F1554	GR. 36	-	400-558	248 min	20 (min)	-	-	-
ASTM A320 GR. L7M	ASTM A320	GR. L7M	-	690	550	-	-	-	99 HRB (max)
ASTM A320 GR. L43	ASTM A320	GR. L43	-	860	725	16	50	-	23-34 HRC
ASTM A473 Type 316 ***	ASTM A473	316	-	515	205	30	50	X	18.0 HRC (max)
ASTM A563 GR. A	ASTM A563	A	HVY HEX	-	-	-	-	100 KSI	32 HRC (max)
			MECHANICAL PROPERTIES						

[illegible]

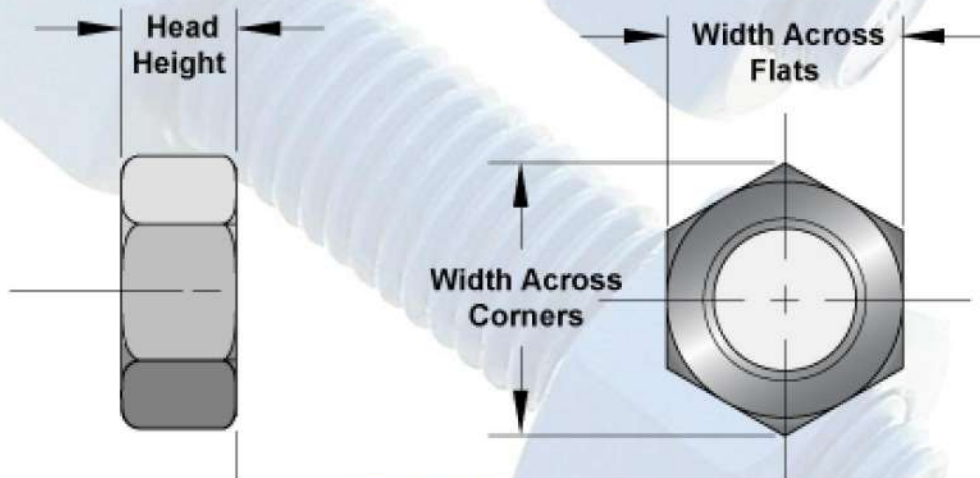
STUD BOLTS / HEX BOLTS / HEX NUTS / WASHERS DIMENSIONS



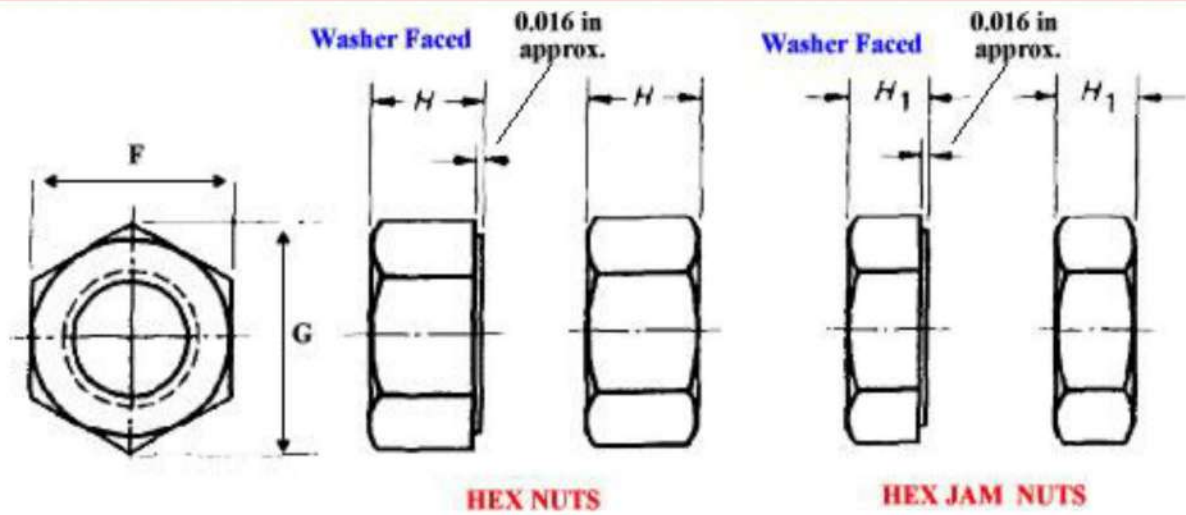
Studs are measured parallel to the axis (L) from the first to the thread without the chamfers (points).



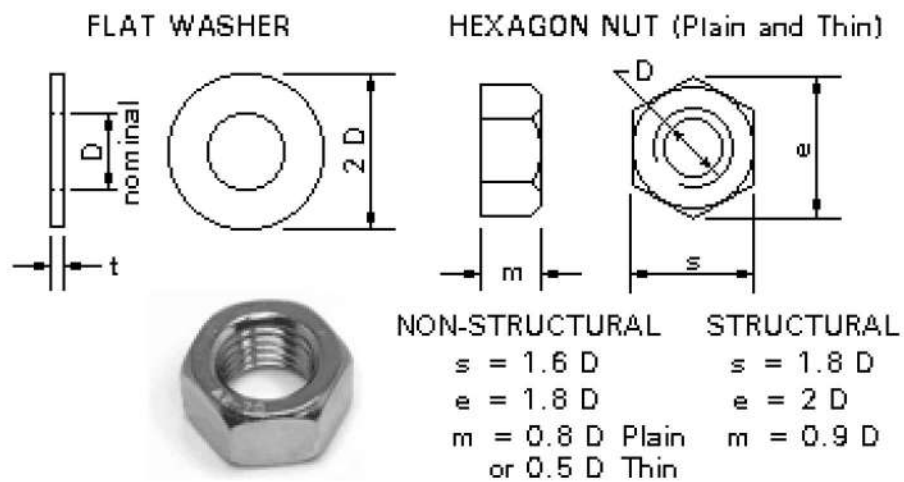
Hex bolts are measured from under the head to the tip of the bolt.



HEAVY HEX NUTS

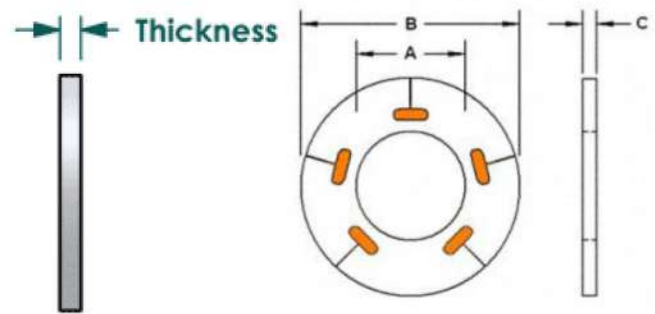
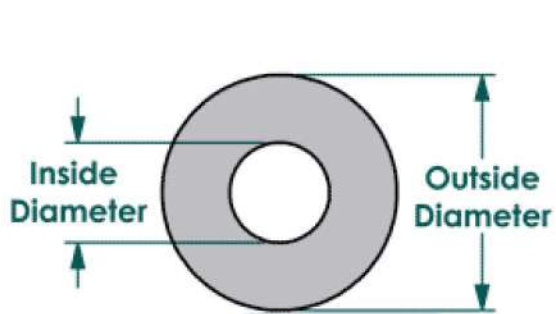


HEAVY HEX / NORMAL HEX / JAM NUTS

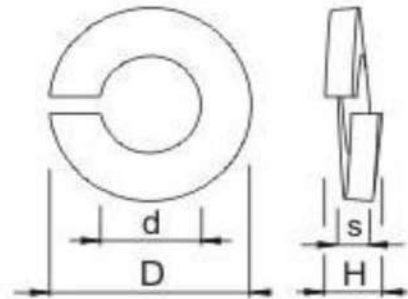


ISO METRIC NUTS AND WASHERS





WASHER DIN 125, F436 LOAD INDICATING WASHER



SPRING WASHER DIN 127



Self color (No Coating)

Electro Galvanized

Hot Dip Galvanized

PTFE Coated Green

PTFE Coated Blue

Zn Yello Chromated

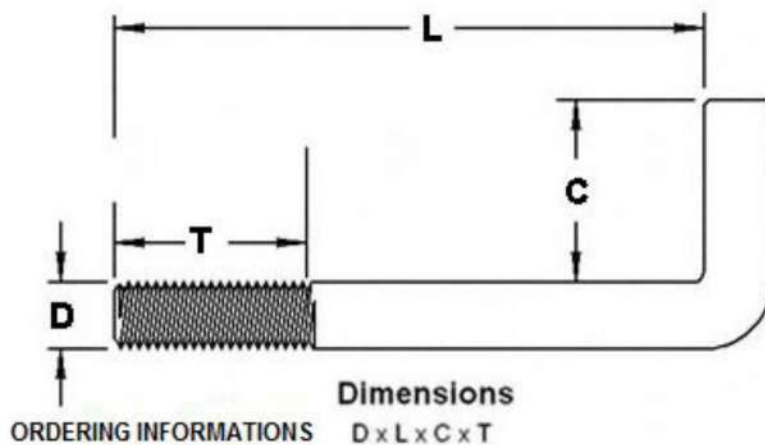
Chrome Plated



IER IN T 5, F 36 AD INDICAT

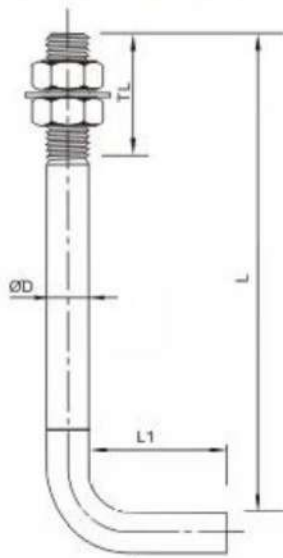
BOLTS SURFACE FINISH

ANCHOR BOLTS

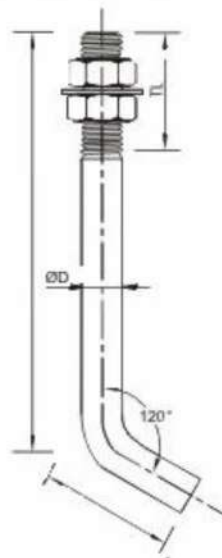


L TYPE ANCHOR BOLTS
L TYPE ANCHOR BOLTS

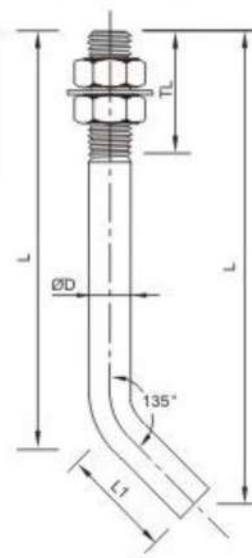
90° BEND
ANCHOR BOLT



120° BEND
ANCHOR BOLT



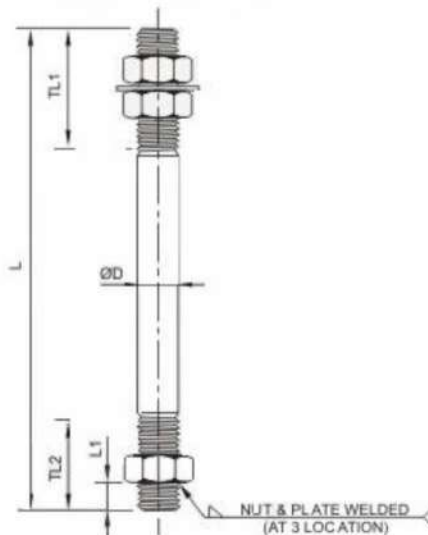
135° BEND
ANCHOR BOLT



Ordering Information : D X L X TL X L1

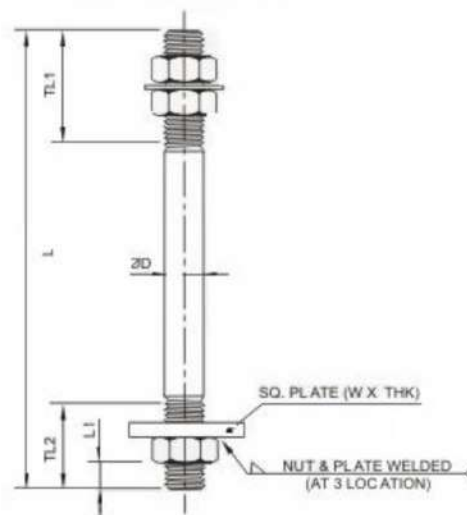
STRAIGHT ANCHOR BOLTS

NUT WELDED
ANCHOR BOLT

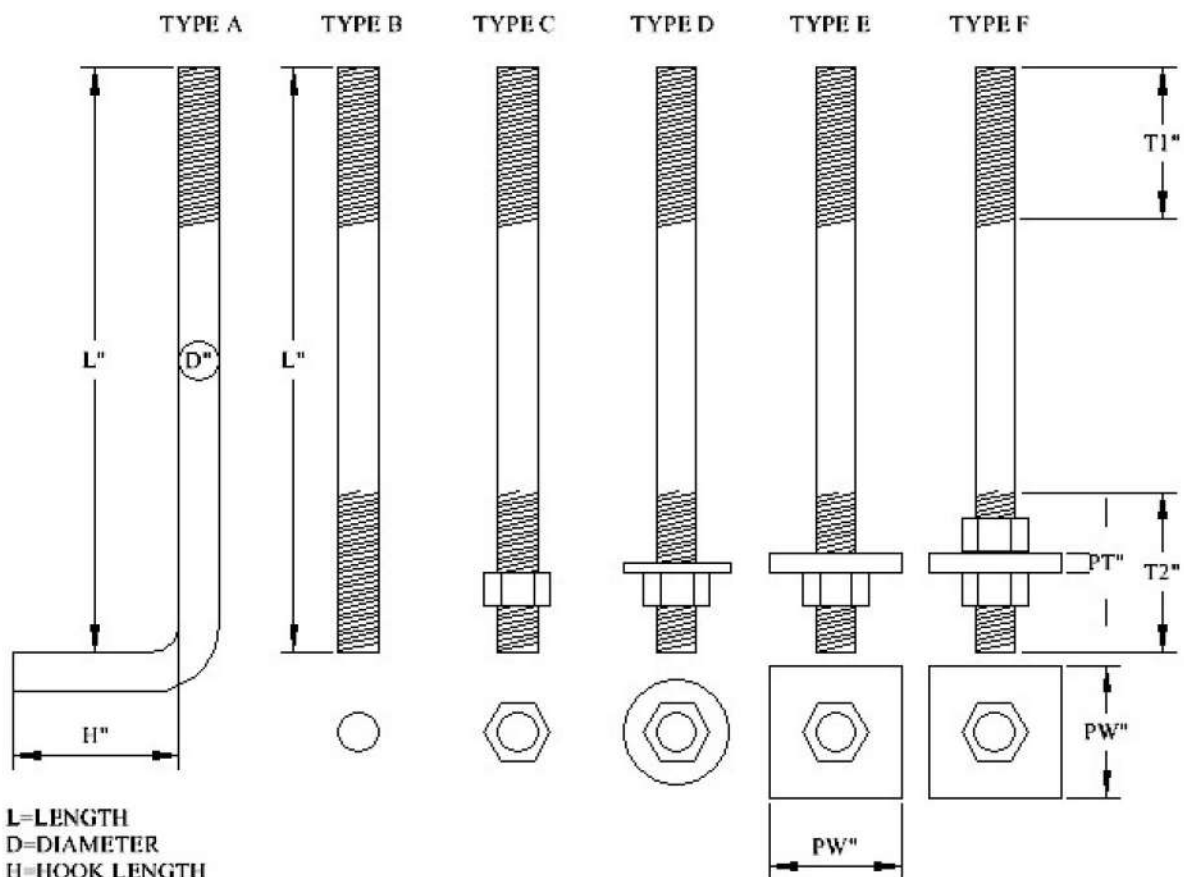


Ordering Information
DXLXL1 XTL2XL1

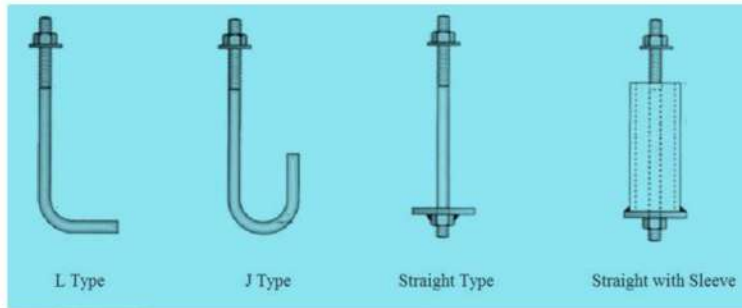
NUT & PLATE WELDED
ANCHOR BOLT



Ordering Information :
DXLXL1 XTL2XL1- W X THK



*SPECIFY WELD TYPE, IE, TACK, FULL WELD, SIZE



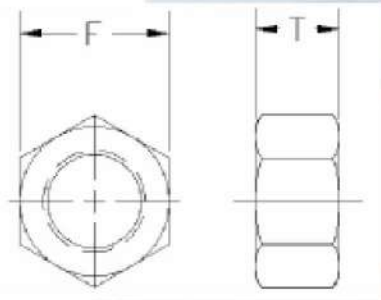
U BOLTS



STANDARDS U BOLTS TABLE (MATERIAL CS GI OR HDG, SS)

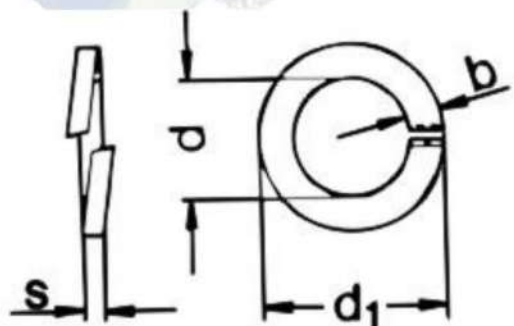
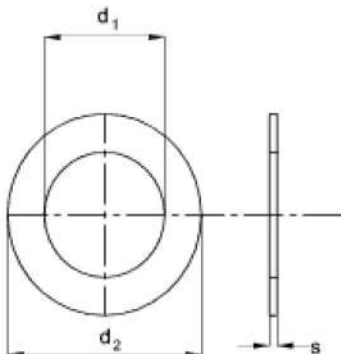
Nominal Pipe Size	Pipe O.D. mm	Rod Dia	B mm	C mm	D mm	E mm	R mm	Weight Each Kgs
0.5" 015mm	21.3	M8	46	25	30	22	11.00	0.050
0.75" 020mm	26.9	M8	56	29	35	27	13.50	0.060
1" 025mm	33.7	M8	61	27	45	37	18.50	0.060
1.25" 032mm	42.4	M8	71	29	55	47	23.50	0.070
1.5" 040mm	48.3	M10	85	37	60	50	25.00	0.130
2" 050mm	60.3	M10	95	35	75	65	32.50	0.150
2.5" 065mm	76.1	M12	124	48	90	78	39.00	0.270
3" 080mm	88.9	M16	142	53	105	89	44.50	0.530
4" 100mm	114.3	M16	167	53	135	119	59.50	0.670
5" 125mm	139.7	M16	192	52	160	144	72.00	0.780
6" 150mm	168.3	M20	225	57	190	170	85.00	1.400
7" 175mm	193.7	M20	250	56	215	195	97.50	1.560
8" 200mm	219.1	M20	285	66	245	225	112.50	1.800
9" 225mm	244.5	M20	300	56	270	250	125.00	1.910
10" 250mm	273.0	M20	340	67	300	280	140.00	2.150

12" 300mm	323.9	M20	390	66	350	330	165.00	2.470
14" 350mm	355.6	M24	428	72	385	361	180.50	3.900
16" 400mm	406.4	M24	488	82	435	411	205.50	4.430
18" 450mm	457.0	M24	528	71	485	461	230.50	4.820
20" 500mm	508.0	M24	588	80	540	516	258.00	5.350
22" 550mm	559.0	M24	638	79	590	566	283.00	5.810
24" 600mm	610.0	M24	688	78	640	616	308.00	6.270



HEX NUT DIN 934 TABLE

Nominal Size	Thread Pitch	Width Across Flats (F)		width Across Corners	Thickness (T)		Unit weight Kg
		Max	Min		Max	Min	
M8-1.25	1.25	13	12.73	14.38	6.80	6.44	0.005
M10-1.50	1.50	16	15.73	17.77	8.40	8.04	0.009
M12-1.75	1.75	18	17.73	20.03	10.80	10.37	0.017
M14-2.00	2.00	21	20.67	23.35	12.80	12.10	0.022
M16-2.00	2.00	24	23.67	26.75	14.80	14.10	0.030
M20-2.50	2.50	30	29.16	32.95	18.00	16.90	0.050
M24-3.00	3.00	36	35.00	39.55	21.50	20.20	0.101





DIN 125 FLAT WASHERS

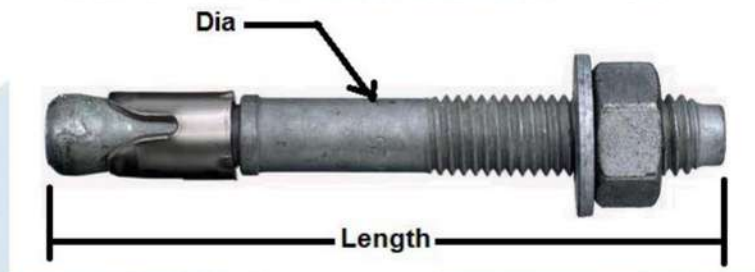
Size d1	d2 x s	Weight/1000 pcs
M8	16 x 1.6	1.830
M10	20 x 2.0	3.570
M12	24 x 2.5	6.270
M14	28 x 2.5	8.620
M16	30 x 3.0	11.300
M18	34 x 3.0	14.700
M20	37 x 3.0	17.200
M22	39 x 3.0	18.300
M24	44 x 4.0	32.300

DIN 127 SPRING WASHERS

Size d	d1 x s	b	Weight/1000 pcs
M8	14.8 x 2	3.0	1.600
M10	18.1 x 2.2	3.5	2.530
M12	21.0 x 2.5	4.0	3.820
M14	24.1 x 3.4	5.0	6.010
M16	27.4 x 3.5	5.0	8.910
M18	29.4 x 3.5	5.0	9.730
M20	33.6 x 4.0	6.0	15.200
M22	35.9 x 4.0	6.0	16.500
M24	40.0 x 5.0	7.0	26.200

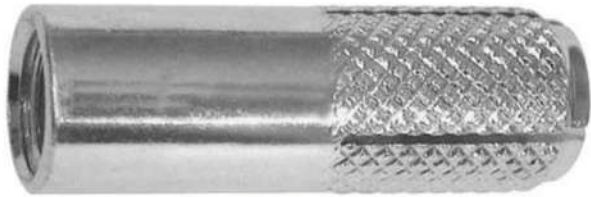
CONCRETE ANCHOR BOLTS, THROUGH BOLTS





THROUGH BOLTS

Thread Size	M6	M8	M10	M10	M12	M12	M16	M16
Overall Length (mm)	55	71	96	126	116	146	145	170
Hole Dia. in Concrete (mm)	6	8	10	10	12	12	16	16
Hole Dia. in Fixture (mm)	6.5	9	11	11	13	13	17	17
Min. Embedment (mm)	30	40	50	50	65	65	80	80
Width Across Nut (mm)	10	13	17	17	19	19	24	24
Tightening Torque (Nm)	4	10	20	20	35	35	80	80
Max. Fixing Thickness (mm)	10	10	20	50	20	50	25	50



Drop in Anchor



DROP IN ANCHOR

Thread Size	Thread Length (mm)	Overall Anchor Length (mm)	Drilled Hole Ø (mm)	Min Hole Depth (mm)
M6	11	25	8	28
M6	11	25	8	28
M10	14	30	12	33
M10	14	30	12	43
M12	21	50	16	53
M12	21	50	16	53

